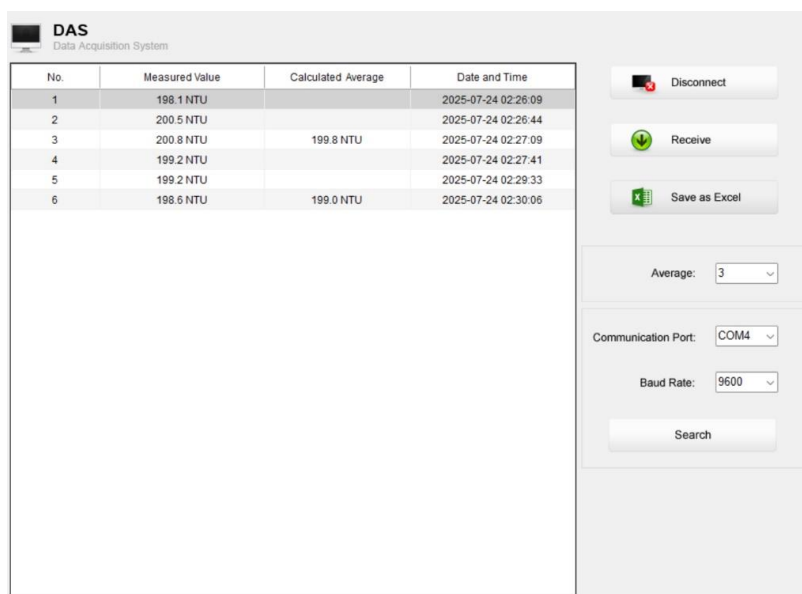


This DAS software is designed for transferring data, receiving measurement values, calculating averages and importing data into Excel. It runs on Windows 10 and is compatible with the following turbidity meters:

- TB100
- TB200



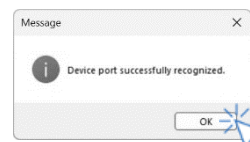
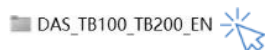
Installing the Driver

- 1.1 Connect the USB cable to both the meter and the computer.
- 1.2 Open the **CP2102Win10_Drivers** folder.
- 1.3 Double-click **CP210xVCPInstaller_x64.exe** or **CP210xVCPInstaller_x86.exe** (depending on your system) and follow the on-screen instructions to complete the installation.

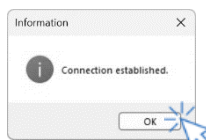


Receiving Data

- 2.1 Open the **DAS_TB100_TB200_EN** folder.
- 2.2 Double-click **TB100_TB200_APP**. The system scans for an available port and displays "Device port successfully recognized."
- 2.3 Click **OK** to start the application.



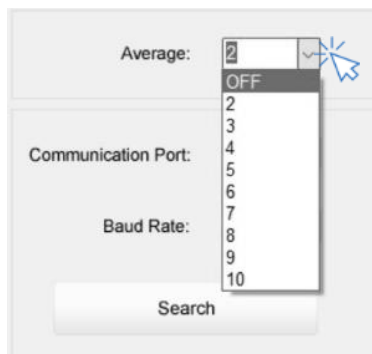
- 2.4 Click **Connect**. The screen displays "Connection established". Click **OK** to continue.
- 2.5 Click **Receive**. The measurement values stored in the meter are automatically transferred to the computer.



Calculating the Measurement Average

This function helps users automatically calculate the average of measurements. Available options range from averaging 2 to 10 readings. The "Calculated Average" column in the data table will automatically display the result.

3.1 Click the Average dropdown and select a parameter.

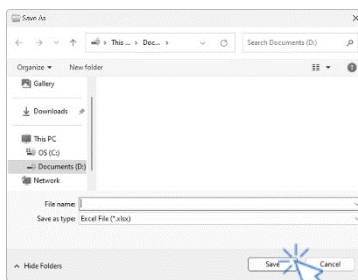
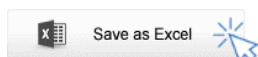


Creating the Excel File

This function saves all received measurement values to a specified Excel file, allowing user to easily edit, analyze, or print the data.

4.1 Click *Save as Excel* to open the Save As dialog.

4.2 Enter a file name, then click *Save*.



WARNING

Once the software is closed, all received measurement values will be lost and cannot be recovered.